



Celebrating 134 Years!

MO ALPHA

Phi Kappa Psi

University of Missouri

Fall 2006

Alumni Pitch In to Improve Chapter House

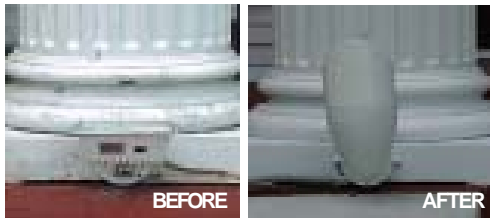
Thank you. Much of the credit for the recent repairs to the Chapter house (*see House Corp. report on the inside cover for more*) can be given to you, our loyal alumni. Through your continued, generous donations over the past few years, upkeep of our almost 130 year old structure would not be possible.

We would like to "honorably mention" the following for their undying selflessness: Our two recent highest monetary donors, Pat Donnelly '77 (\$25,000) and John Galbraith '39 (\$5,000) without whom little could have been accomplished this past summer. John also donated \$10,000 in '03-'04 which helped pay for much of the Old Wing bathroom renovation.

Additionally, we have a core group of alumni who give not only money and supplies, but also much-needed labor, which has ended up saving thousands of dollars for use on other projects which require professional contracting.

In 2006, the following worked tirelessly through the summer heat (listed in order of time donated): Dave Hellwig '73, Steve O'Rourke '74, Wynn "Wheels" Wiegand '74, Randy Fisk '71, Bill Scheidker (Stein) '66, Harry "Scooter" Smith '68, Ed Brandon '05, Jackie O'Rourke, Eric Ruegg '68, Andy Fisk '00, Becky (McCarty) Fisk, Donn Yeagley '73, Kevin Kamp '97, Joe Freund '01, Jeff Synos '01, and Adam Wiegand.

Here are a couple of examples of what we've been able to accomplish with everyone's help.



Top left: New lights were installed to light up the columns at night. Top Right: (l-r) Steve O'Rourke, "Wheels" Wiegand, Becky (McCarty) Fisk, Dave Hellwig, Eric Ruegg, Bill (Stein) Scheidker, Harry "Scooter" Smith, Joe Freund, Kevin Kamp, Andy Fisk, & Randy Fisk after working on the house (Jeff Synos not pictured). Left: A new drain & cafeteria doors were installed and concrete work finished the project off. Above: Steve O'Rourke and Rob Ditter break concrete out to replace the drainage system.

O'Rourke New National President

Stephen R. O'Rourke '74, was elected Phi Kappa Psi's National President at the recent Grand Arch Council (GAC) in New Orleans, LA, held Aug 9-13, 2006.



His term will extend until Aug. 2008 when a new president will be elected at that GAC in Indianapolis.

He previously held the Executive Board offices of Secretary (2000-02), Treasurer (2002-04), and Vice President (2004-06).

Nationally, Steve is a member of the Ancient Order of the S.C. and served as the Director of Chapter Advisors for six years. He has received the GAC's *Outstanding Chapter Advisor Award* and the fraternity's highest award, the *Edward H. Knight Award of Merit*.

Locally, he has served as MO Alpha Chapter Advisor since 1977; held several positions on the MO Alpha House Corp.; was the Illinois Eta House Corp President for almost 10 years; and maintains membership in Phi Psi Alumni Associations in St. Louis (where he served as VP/Treasurer for many years), Kansas City (where he won their *Man of the Year* award), and Mid-Missouri (a founding member).

He has received the St Louis Alumni Association's Keeper of the Taps, the Al Stoever Meritorious Service Award, MO Alpha's Alumni of the Year Award (twice), and the Ben Brown Outstanding Alumni Award (four times).

INSIDE

- 2 House Corp. Report
- 4 Chapter Report
- 5 Alumni Updates
- 6 Donation Options

The Missouri Alpha House Corporation Report

The House Corporation has embarked on many new projects over the last several summers. Projects during the summer of 2004 included: a complete renovation of the Old Wing bathroom, which added working showers and fixed old leaks (about \$30,000); replacing the front entrance and two other main doors (\$6,000); installation of new lighting and drop ceilings in the New Wing (\$2,000); and replacing all New Wing room windows with modern thermal windows and screens (about \$10,000). Many of these projects were required to conform to city code, and to better compete with other student living alternatives. To stretch our limited funds, many projects were completed on weekends by our alumni.

Last summer structural maintenance was needed for our 125 year-old homestead. Projects included upgrades and repairs to the main roof, repairing exterior wood rot, replacing four smaller roofs, and repairs to the boiler system, which totaled about \$17,000. We also started several beautification projects, including drywall and masonry repair throughout the house, repainting the Old and New Wing interiors, including the kitchen, cafeteria and living room (\$1,600); and replacing an Old Wing bathroom window (\$1,000, donated by Randy and Becky Fisk).

In the spring of 2006, we replaced the New Wing hall carpet (\$2,600). This summer, additional projects involved work from outside contractors. We contracted for a structural engineering and an electrical load study to find and repair any *major* faults. As a result, we spent about \$4,500 upgrading old and overburdened electrical panels/wiring, and another \$3,000 is anticipated to complete all of the recommended work.

Additional summer projects included concrete work on the back cafeteria steps and front step decorative sidewalls (\$4,600). Regarding our carpentry concerns, we were finally able to fix the remaining exterior wood rot on the sunken garden side, fixed some areas of the house which were settling (requiring jacking and shoring), repaired the guest room bathroom door and frame, and replaced all New Wing room doors (cost: \$6,630). We also needed to replace three Old Wing room windows (\$4,750) and plan to replace two more by Christmas (\$3,600).

When the Old Wing showers were completed in 2004, it often caused a shortage of hot water between the two working bathrooms. Therefore, this summer the corporation replaced the aging 40 gallon hot water heater with two new 50 gallon tanks (\$1,780). While the Old Wing showers now have plenty of hot water, the New Wing shower requires repair (est. cost \$3,000).

We continue to stretch our limited funds as much as possible, as many projects were completed this summer were done by our alumni (see related story). We built 22 new New Wing bunks (\$1,000 for materials), rewired the electrical in the sunken garden and the front column lights (adding a new timer), enclosed all exterior wires in conduit, stained and touched-up the front porch, repaired the rear deck steps, built new shelving and painted the walk-in utility closet, repaired wallpaper in the Old Wing common areas, painted all Old Wing wood trim a new dark hunter green (vs brown), and stained all the new bunks and room doors (all at less than \$500).

Alumni also dropped three large front yard trees which had died and disposed of the wood. We paid to have the stumps removed and to clean out some of the brush growing over the rear parking lot (\$660).

Other summer projects included whole-house carpet shampooing, professional interior cleaning at the end of the school year, fixing the decorative attic front window, shoring up the stair platform leading to the basement, replacing stained drop ceiling tiles, and installing a new light and fan in the ladies powder room bathroom (all at around \$2,000).

We invite you to stop by the house this fall for a football game or anytime you happen to be in Columbia. Any questions or suggestions for the house corporation can be forwarded to me at (618) 632-0555 or TWheels33@aol.com

Wheels...

Wynn (Wheels) Wiegand, '74
President, MO Alpha House Corp

Future House Corp Projects

Last March, one of the worst hail storms in recent years swept through Columbia. Over the summer, we contacted our insurance carrier to assess the damage caused by the hailstorm.

Our insurer determined the roof was a total loss, and a whole new roof must be installed.

As soon as the contractor can be lined up, the current roof will be completely removed, and even the old, rotten underlying wood will be replaced. Our insurance deductible is \$2,500, and all other costs of replacing the roof should be covered by our insurance claim.

We had planned to replace all the house gutters by this September (we received a bid of \$4,500), however, this project will have to wait until the new roof is installed later this fall.

Other future projects include tuck-pointing the Chapter room and basement, repairing the sunken garden drain, repairing the water-damaged floor in front of the Old Wing bathroom, working on exterior water drainage around the New Wing, more Old Wing window replacements, and painting the exterior of the house.

If you would like to help with any of these projects or would like to donate money to allow us to continue making these needed improvements, contact Wynn "Wheels" Wiegand. Any donations of \$500 or more to the alumni fund will be recognized with an engraved brick in front porch of the house.

Remaining Home Tiger Football Games

Oct. 21 (Homecoming &
Phi Psi reunion of
1960's/ 1970's)
vs. Kansas State
Oct. 28 vs. Oklahoma
Nov. 25 vs. Kansas

As always, alumni are welcome to tailgate in the side yard before every home football game.

Small Changes Make a Big Difference



Above: New solid core doors were stained and hung throughout the house.



Right: The New Wing drop ceilings, both upstairs and downstairs, were repaired, adding to the improved look of the New Wing.



Above: Two new hot water heaters replaced the aging one, providing the necessary amount of hot water to serve the upgraded bathroom facilities.

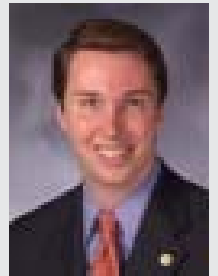
Phi Psis in Missouri Politics

Scott Rupp '94, has served two terms in the Missouri House (2002 & 2004), representing NW St. Charles County. Scott was recently elected to the Missouri Senate in April, and is currently the state's youngest serving state senator. He represents portions of St. Charles and Lincoln Counties, and is currently running for re-election to the Senate.



Scott currently resides in Wentzville, Mo., with his wife Natalie, daughter Noelle, and infant son Scott Jr.

Bryan Pratt '92, has also served two terms in the Missouri House (2002 & 2004), representing eastern Jackson and western Lafayette counties. He is running for re-election to the House.



Bryan resides in Blue Springs, Mo., with his wife Sherry, and infant daughter Leah.

BEFORE & AFTER

Left: The window in the room next to the Old Wing restroom was replaced with a new Pella window. Bottom left: Wood rot on the bay window of the formal room was torn out and replaced. Below: The plaster on the sides of the staircase on the front porch had begun to deteriorate. They were torn out and replaced with more durable materials.



BEFORE



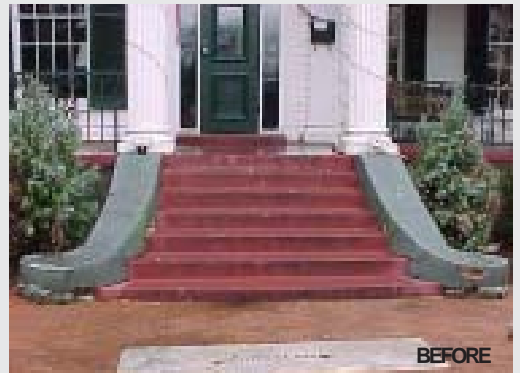
AFTER



BEFORE



AFTER



BEFORE



AFTER

Missouri Alpha Chapter Report, Events & Activities

The Missouri Alpha Chapter is enjoying continued success at the start of another new school year. Currently, 38 men live in the chapter house, but we are confident we will get close to capacity (49) toward the end of the year. Our first fall pledge class consists of 12 men, which we are confident will all become great brothers. Seven of those pledges live in house while five live out of house, however, all pledges must sign a housing contract before they are initiated. We will start our second pledge class of the year around the end of October. We have five men committed to us right now, and are meeting with nearly 20 others. We are confident the second fall pledge class will have at least 10 men. Recruitment will continue throughout the year, and our goal for the winter semester pledge class is another 10 men.

Scholarship is always an area that we strive to improve. The chapter's GPA sits just below a 2.8, while the all fraternity average is a 2.9. Our academic program is up and running, and all brothers under a 2.5 are on probation and must attend study hours, as well as report test scores to the scholarship chair. This past summer, we were recognized for our academic improvements when we received an Academic Improvement Award at the Grand Arch Council.

The Missouri Alpha Chapter continues its excellence on the athletic field. After a strong second place overall finish in our division last year, we are dominating football and softball this year. Our "A" football team takes an undefeated record into the playoffs, while three other Phi Psi teams compete in the playoffs in both football and softball.

The chapter is also staying active in philanthropics and community service. We had a strong finish in Delta Gamma's Anchor Splash philanthropy. We plan to continue our traditional projects like our "Trick or Treat so Kids Can Eat" canned food drive, and the "Christmas at the Grasslands" party for the Boys and Girls Club of Columbia. We also plan to invite the Boys and Girls Club over near Halloween for an afternoon of trick or treating at the fraternity house. Homecoming preparations are also in full swing, and we expect a strong finish with our partners from Alpha Chi Omega and Delta Chi.

The condition of the chapter house has been improving significantly. We are all tremendously grateful for all of the hard work our housing corporation has put into improvements, and those who have supported their efforts through donations. It's amazing what new carpet and a fresh coat of paint can do for chapter morale. Our house managers are committed to keeping the house maintained and cleaned.

At this summer's Grand Arch Council, we also received the Big Brother Award in recognition for our assistance to the SIUE and Auburn chapters. The university is also recognizing our excellence as Nick Boyan was selected as the runner up for Outstanding IFC President last year, and house director and chef, Ed Brandon, received the Greek Life Outstanding House Director Award. Overall, the state of the chapter is strong, and we are moving in the direction of becoming the best Phi Psi chapter in the nation. I encourage you to stop the house or a tailgate to see for yourself.

Respectfully submitted,
Nicholas A. Boyan, Missouri Alpha Chapter President



Several MO Alphans were in attendance at Phi Kappa Psi's Grand Arch Council in New Orleans from Aug. 9-13, 2006. Back: (l-r) Kevin Kamp, Karl Marschel, Bill Reinecke, Kevin Kozlen, Mark Solomon, and Paul Diebler. Front: (l-r) Bill "Stein" Scheidker, Brent Adams, David Metzger, Steve O'Rourke, Joseph Kaiser, Joseph Freund, Brian Schierding, Frank Kurz, Wynn "Wheels" Wiegand, and Nick Boyan

Homecoming Reunion Planned by Alumni from 1960's & 1970's

Brother Richard Yukes '68 is helping to plan another reunion of Phi Psi with alums from the 1960's & 1970's for this year's Homecoming game on October 21, 2006. Every couple years, alumni from this era get together to catch up with each other and relive the good old days, but all alumni are welcome to participate.

With the help of Harry "Scooter" Smith '68, the group has reserved the lower level of Harpo's on Friday night before the game. Any alumni who are in town that evening are invited to join the group for drinks and stories beginning at 6p.m.

As always, tailgating before the game will take place in the side yard at the chapter house. Shortly after the game, Bill Sappenfield '71, is planning a BBQ in the side yard.

More On MO Alphans

The 50's

XXX '55 beca

The '60's

Pat Howle '60 retired from the USMC in 1981, and entered the HR field for a few years. He then moved to Maui to teach Scuba Diving. After 11 years, he relocated to the bay area of California in 1999, where he currently resides.

The '70's

Jeff Abbott '77 became a grandfather in Nov. 2004. He's been living in Tokyo, Japan since 2002, as the President of Asia-Pacific operations for Gambro BCT, Inc. He plans to return to the states in 2008.

The 80's

Richard Alan Hahn Jr. '80 is a Sr. Art Director for Rhino Marketing in Houston, TX, and is father to two great kids.

Scott Diener '81 is the executive news director for KTVK-TV in Phoenix, AZ.

Ted Huff '81 earned his doctor of education (Ed.D.) from St. Louis University in May 2005. He is an Asst. Principal in the Fort Zumwalt School District.

Jeff Harrison '86 is looking forward to bringing his baby girl to a few Tiger Football games this fall.

The '90's

Mike Gause '92 and his wife, Gia, welcomed their first, a daughter, this summer.

Matt Smith '92 and his wife, Sandy, are expecting a second child this fall.

Cesar Lipka '95 welcomed his first, a son, Tomas Edward, on Sept. 22, 2004. He continues to serve as VP of Production for SuperDrob SA in Warsaw, Poland.

Kevin Kozlen '96 and his wife, Lisa, are expecting a second child in March 2007.

Chapter Eternal

Dale C. Rogers Jr. '39

Robert J. Hyde '52

Jerry D. Rapp '52 passed into chapter eternal on Nov. 27, 2005. He served as an officer in the U.S. Army and as a lawyer before joining Mead Corp. where he became a V.P. and Chief Legal Officer. In retirement he continued practicing law and consulting corporations.

James A. Laws. '55

K. Dale Puckett '55 passed into chapter eternal on June 12, 2005. He served as an officer in the U.S. Army and returned to Columbia to join his father's clothing business. He ran the business for more than 40 years and worked to improve the downtown business district. He was a co-founder of CrimeStoppers and served on numerous boards and committees.

Ronald V. Raine '56

Van K. Smith '61 passed into chapter eternal on Nov. 29, 2005. He was a lifelong resident of Mountain View, MO, and owner of Smith Flooring. A long-time supporter and contributor to MO Alpha, a brick engraved with his name/initiation year stands as a lasting legacy of his dedication to the chapter.



Several MO Alphans celebrated the dedication of the new Phi Kappa Psi National Headquarters, Laurel Hall, in Indianapolis: (l-r) Ed Brandon '05 (catered the event), Steve O'Rourke '74, Mark Solomon '98, and "Wheels" Wiegand '74.

Let us know what's going on with you and your pledge brothers. Drop a message at phipsi@students.missouri.edu or at Phi Kappa Psi, P.O. Box 6906, Columbia, MO 65205

The MO Alpha Endowment Fund: A Tax Deductible Donation

In the last issue of the MO Alphan, we highlighted the many different options you have to help Phi Kappa Psi and Missouri Alpha.

Fundraising efforts throughout the 1980s and 1990s offered the choice of giving to either the "Capital Campaign" which went toward property maintenance and improvements, or the "MO Alpha Endowment Fund" which funded educational scholarships.

Due to the low number of undergrads living in the Chapter house in the 1990s, the House Corporation was not receiving full rent from the Chapter. At the same time, the Corporation faced changes to local city and fire codes. Therefore, alumni donations were only solicited for capital expenses to repair and maintain the chapter house.

Unfortunately, capital donations are NOT tax deductible, and many alumni have asked how they can make a tax deductible donation to the chapter.

The MO Alpha Endowment Fund is an IRS Code 501(c)(3) educational foundation, and donations to it ARE tax deductible if you use IRS Form 1040, Schedule A, to itemized your tax deductions.

Due to rapidly changing IRS rules, and increased scrutiny regarding 501(c)(3) donations and organizations, the past few years have been spent researching these rules and ensuring that the endowment fund is compliant, so as not to lose this benefit.

Some employers will match their employees donations to a 501(c)(3) endowment fund, so it may be possible to easily double your donation to the MO Alpha Endowment Fund.

The recently appointed trustees of the MO Alpha Endowment Fund include John Gillis '71, L. Blake Parrish '74, and Steve O'Rourke '74.

More information about giving to the MO Alpha Endowment Fund will be included in future alumni donation requests.

Phi Kappa Psi
MO Alpha Chapter
809 South Providence Road
Post Office Box 6906
Columbia, MO 65205

NONPROFIT ORG. U.S. POSTAGE PAID COLUMBIA, MO PERMIT #338

RETURN SERVICE REQUESTED